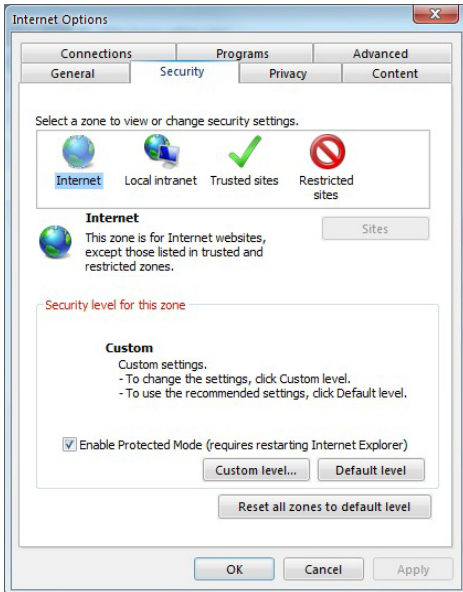


KARENS KARE BEARS CAMPUS VIDEO FEED SETUP

Prepare your computer to view the feed. In order to gain access to the site you have to set your computer up for the DVR application to run. Follow these steps to begin viewing immediately.

NOTE: These instructions are for Internet Explorer 6 or higher and the feed can only be viewed on Internet Explorer only.



STEP 1: Open Internet Explorer. Go to the drop down menu under TOOLS and select INTERNET OPTIONS. A pop-up screen will open.

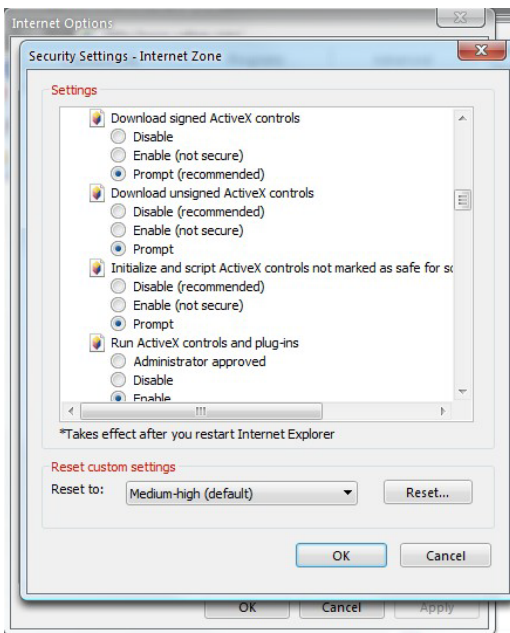
STEP 2: Select the SECURITY tab, then click on the CUSTOM LEVEL button in this tab.

STEP 3: Change the following ActiveX settings.

- Download signed ActiveX controls: **PROMPT**
- Download unsigned ActiveX controls: **PROMPT**
- Initialize and script ActiveX controls not marked as safe: **PROMPT**
- Run ActiveX controls and plug-ins: **ENABLE**
- Script ActiveX controls marked safe for scripting: **ENABLE**

if it is an option:

- Allow automatic prompting for file and code downloads: **ENABLE**



YOUR COMPUTER WILL NOW BE ABLE TO VIEW THE LIVE STREAM!